

Ten Problems in Industrial AI Ethics

Joanna J. Bryson

Artificial Models of Natural Intelligence
University of Bath, United Kingdom



Mannheimer Zentrum für Europäische Sozialforschung

Outline

- Non-Problems
- Problems

UK EPSRC's Principles of Robotics (2011)

1. **Robots are multi-use tools.** Robots should not be designed solely or primarily to kill or harm humans, except in the interests of national security.
2. **Humans, not robots, are responsible agents.** Robots should be designed & operated as far as is practicable to comply with existing laws & fundamental rights & freedoms, **including privacy.**
3. **Robots are products.** They should be designed using processes which assure their safety and security.
(of 5...)

UK EPSRC's Principles of Robotics (2011)

4. **Robots are manufactured artefacts.** They should not be designed in a deceptive way to exploit vulnerable users; instead their machine nature should be **transparent**.
5. **The person with legal responsibility for a robot should be attributed.** [like automobile titles]

Outline

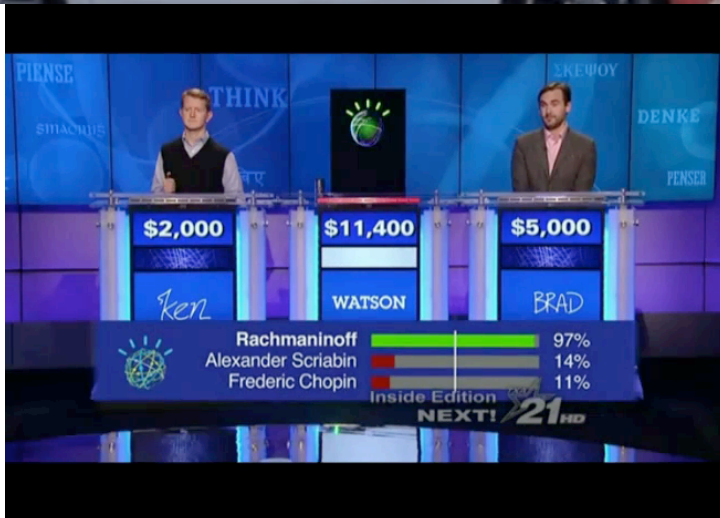
- Non-Problems
- Problems



-3 Intelligence



big dog
Watson
driverless cars

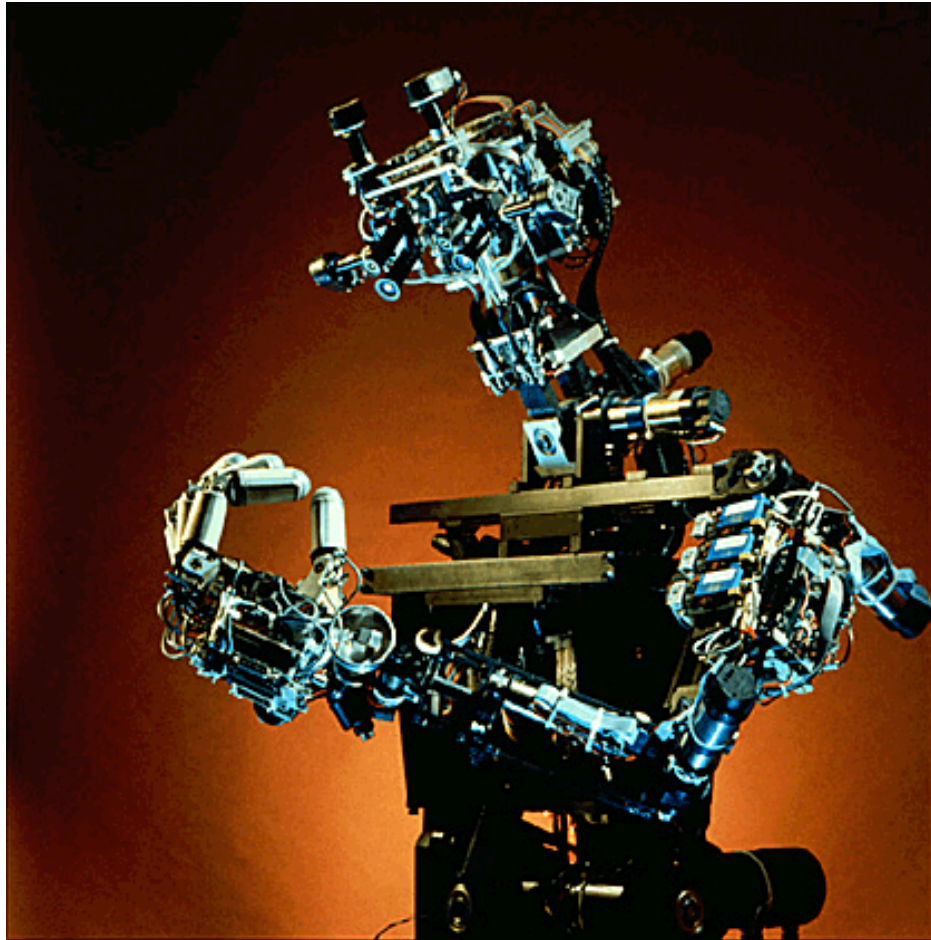


Big data + Bayesian-based machine learning has successfully mined human intelligence in a broad range of domains.

-2 Reliability



Industrial robots are capable of thousands of operations a day, for years at a time.



- I Moral Patience

Both robots and ethical systems are artefacts of our culture.

There's no predetermined place for robots in our ethical system.

We are responsible for robots as their creators, making ethical obligation to them would be unethical.

Outline

- Non-Problems
- Problems

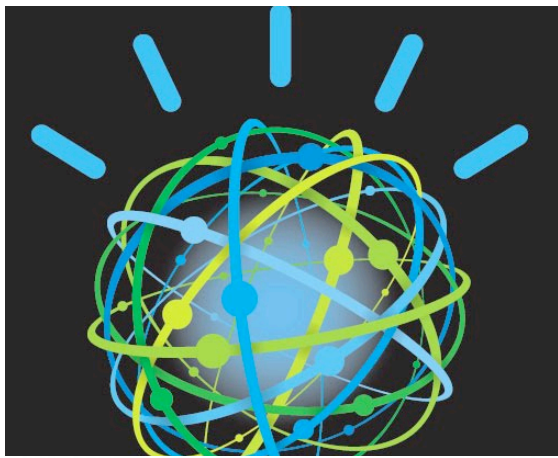
I Privacy



Doomsday Book

Networked gadgets with cameras, microphones, accelerometers that can learn your daily and exceptional patterns.

Note: already a problem with phones.



2 Redundancy



Not just robot office cleaners: AI scientists & lecturers

Note: obsolescence already a problem, millions of people banned from work



©BBC

bbc.co.uk/doctorwho

3 Liability

Probably less of a problem than expected – either operator or manufacturer.

Note: EPSRC Principles **deliberately** reduce problem to the same as for cars, guns, heavy machinery.

4 Autocracy



Say we can drop deaths per year by 90%. But it will be a **different** 3,500 Americans who die next year. And we can't go the wrong way on one way streets **ever**.

Note: Already a problem with automated ticket machines.



5 Isolation / Asociality

AI may be more entertaining than anyone in your village, or at least entertaining enough and less likely to laugh.

Note: Already a problem with books, plays, movies, TV... but may alter behaviour earlier. But may be fun.



6 Sustainability

Sell lots of power-hungry plastic, metal,
rare-earth stuff.

Note: Already a problem with
computers & phones.



7 Hackers

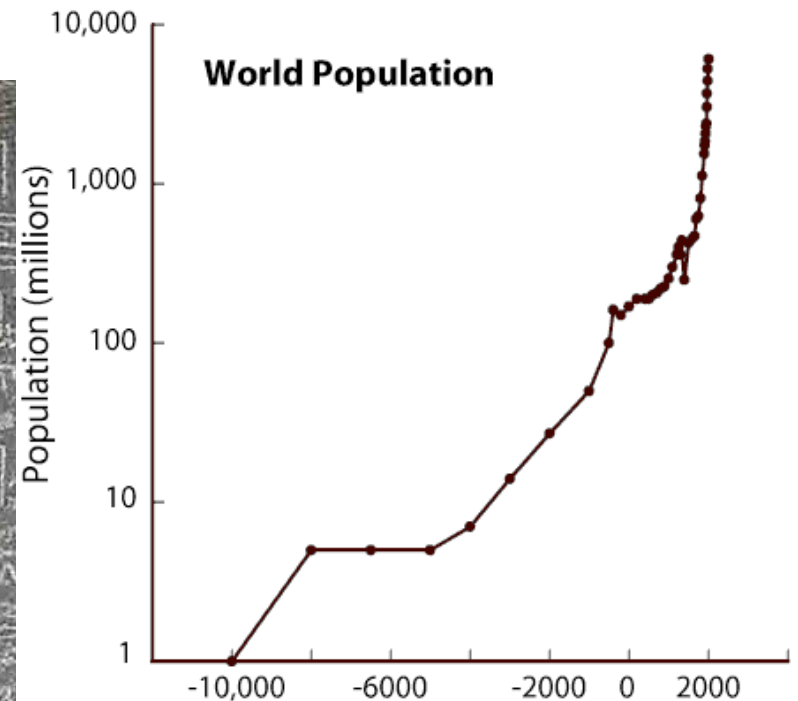
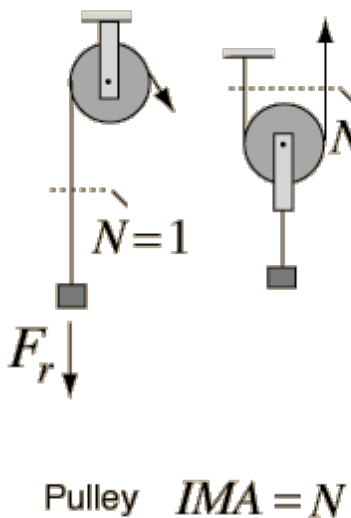
The flip side of privacy: actions not just sensing.

Note: Actually a new problem?

As people who know the value of morphology / embodiment in intelligent behaviour, we could argue that every machine, every prosthetic memory, has been part of our construction of AI.

12,000
years
of AI

AI enhances human power. **The real problem is governing AI-enhanced humans.** But we are obliged to help make our work governable.



Ten Problems in Industrial AI Ethics

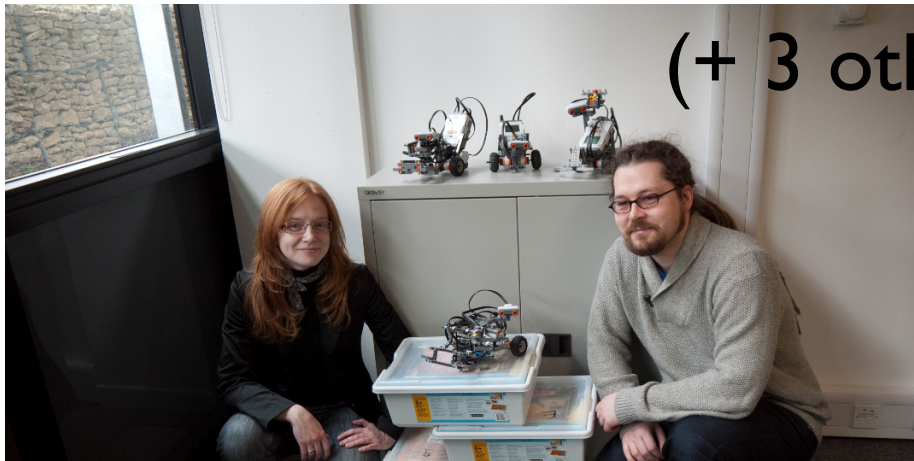


Joanna J. Bryson

@j2bryson

University of Bath, United Kingdom

(+ 3 others)



Mannheimer Zentrum
für Europäische
Sozialforschung

Amoni
Artificial Models of Natural Intelligence



Extending the Human

We don't need a
humanoid Rosie.

We need intelligent
prosthetics that make
humans more
productive at their
employment.

